



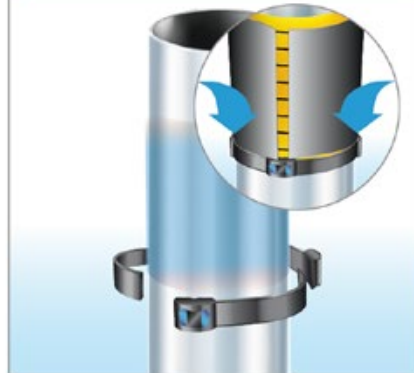
MarineProtect™-100

1. Surface Preparation



- Prepare the surface carefully. Remove all rust, loose particles and loose residues of old coatings from the surface of the pile. Remove any organic substances from the surface. After cleaning the surface, proceed immediately with the coating to avoid the development of rust and organic growth. We recommend, whenever possible, to use sand or water blasting to gain best results.

2. Mechanical Support



- **Optional:** In case of coating a section of the pillar with a distance to the sea ground, a Smart® Band may be used below the first Jacket as a mechanical support. Use three Smart® Band stripes and three standard Smart® Band Buckles to form a ring as indicated in the picture. Fasten the Smart® Band with the SM-FT 2000 or SM-FT 1000 mounting tool.

3. Primer Application



- Apply **MarineProtect™-Primer** on the cleaned surface by hand, roller or using a spreading tool. Make sure that the complete surface is coated with **MarineProtect™-Primer**. The consumption of **MarineProtect™-Primer** is about 350 g/m².



Depending on the color of the existing coating, a limited visibility of the **MarineProtect™-Primer** is possible.

4. Tape Wrapping



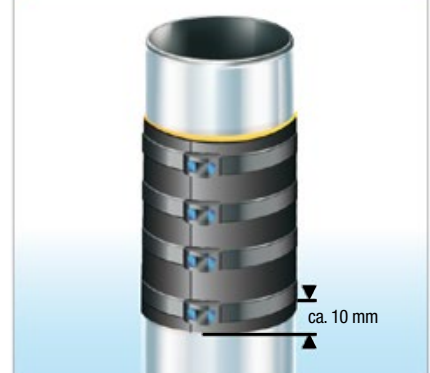
- Wrap **MarineProtect™-Tape** helically around the pile using a minimum overlap of 50%. The first and the last wrapping must be done twice with 100% overlap. The width of the tape depends on the diameter of the pile (see table below). For diameters of more than 300 mm it is recommended to work with two persons on opposite sides handing over the rolls. Make sure that the tape is applied without wrinkles. After wrapping **MarineProtect™-Tape**, flatten the tape by hand and press it onto the surface of the pillar. The wrapping height must be at least 1 cm higher than the upper edge of the uppermost jacket.

5. Mounting of Jacket



- For mechanical protection apply **MarineProtect™-100 Jacket**. If the coating area of the pile is higher than 1.9 m several jackets may be used. Start mounting the lower jacket. We recommend to install the shorter jacket first. Prepare the Smart® Band sections (circumference + min. 5 cm) per Jacket. The length of the jacket allows a sufficient overlap. The overlap of the jacket should not face the breaking waves.

6. Mounting of Jacket



- Set the Smart® Band in a distance of app. 185-190 mm and close them with Smart® Band Hybrid Buckles. Put these buckles on top of the overlap of the jacket as indicated in the picture. Fasten the Smart® Band with SM-FT 2000 or SM-FT 1000 mounting tool. An additional jacket can be mounted above the first one. Position the upper jacket with a min. overlap of 30 mm. Mount the last Smart® Band of the lower jacket centered in the overlap area with the upper jacket. The upper jacket is mounted as described before.

Diameter of the pile	Recommended width of MarineProtect®-Tape
< 150 mm	50 mm
150 mm to 800 mm	100 mm
> 800 mm	200 mm

Jacket width (mm)	Min. quantity Smart® Band per jacket (pcs.)
950	6
1150	7
1900	11